

# SFM Acoustic Surfaces

## HushStone Light

---

### Versatile, sustainable sound absorbers

HushStone Light is a rigid, durable absorber made from recycled glass. The material is suitable for external use, indoor use and settings which require high impact resistance. It can be worked on site, pigmented or treated with a range of finishes and is non combustible, chemically inert and non fibrous. Panels can be either mechanically fixed or bonded and a range of sizes are available including custom options.

### Key features:

- High sound absorption
- Non combustible
- Weather resistant
- Self bearing
- Easily cut on site
- 94% recycled glass
- Bespoke sizes available

### Noise barriers, tunnels and industrial

Ideal for adding an absorbent facing to noise barriers and many other areas requiring a durable and weather resistant solution. Installation is simple as panels can be cut on site and mechanically fixed or bonded to the substrate. Many build up options can be used to suit acoustic requirements and budget.

### Other applications

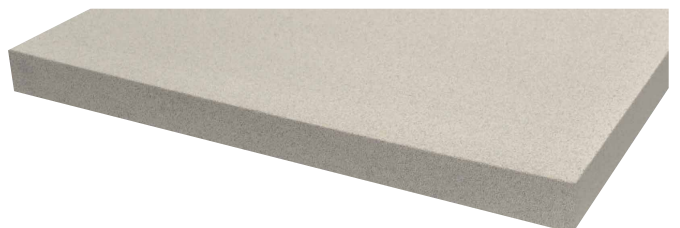
Swimming pools, spas - Sports halls, Enclosure lining, Duct lining, Render board for external plastering. Many more...

### Working with HushStone Light

One of the main advantages of HushStone Light is the ease of installation. Panels can be worked using normal woodwork equipment and a dust mask. We can adjust the adhesive to create very flexible panels. Likewise, if you want an even surface on flat walls, our standard panels are ideal.

### Fixing methods

Bonding can be achieved using either adhesive or mechanical fixing depending on substrate and setting. We can provide Ceresit CM18 thin-bed adhesive mortar which will adhere to all solid, load bearing surfaces. This allows for very rapid, economical installation. Alternatively, mechanical fixing is suitable and allows for frameworks and air gaps which improve acoustic performance. Contact us for guidance and technical details.





### Technical properties

Standard width 600mm

Standard length 1200mm

Thicknesses 15 - 100mm

We can make other sizes with a maximum length of 2.4m. A small set up charge is incurred

Weight at 25mm 8 kg/m<sup>2</sup>

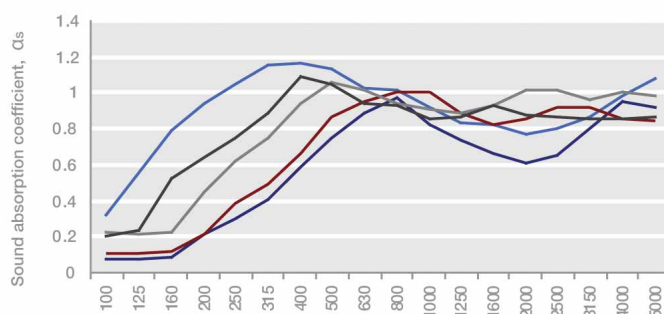
Weight 320 kg/m<sup>3</sup>

The main constituent of HushStone Light - expanded glass beads



### Acoustic performance

Tested in accordance with BS EN ISO 354: 2003



### Mounting parameters:

25mm panel, 50mm air gap

25mm panel, 50mm mineral fibre

50mm panel

50mm panel, 25mm air gap

85mm panel 12 gap for fixings

	125Hz	250Hz	500Hz	1kHz	2kHz	4kHz	EN-ISO 11654, $\alpha_w$
25mm panel, 50mm air gap	0.10	0.30	0.75	0.85	0.65	0.90	0.60 (M) (H) (H): class C
25mm panel, 50mm mineral fibre	0.55	1.05	1.10	0.90	0.80	0.90	0.90 (L): class A
50mm panel	0.10	0.35	0.85	0.95	0.85	0.85	0.65 (M) (H) (H): class C
50mm panel, 25mm air gap	0.20	0.60	1.00	0.90	1.00	1.00	0.90: class A
85mm panel 12 gap for fixings	0.30	0.75	1.00	0.90	0.90	0.85	0.95 : class A

